

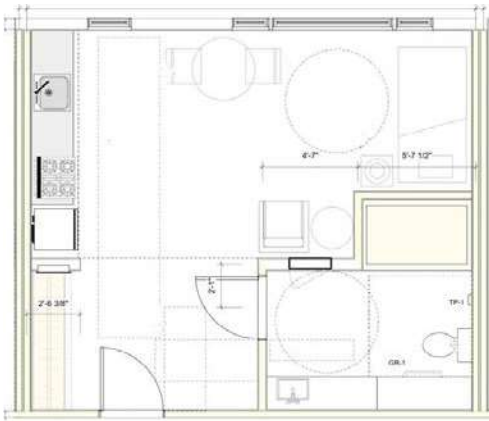
CENTREPOINT



The view from one of the studio apartments.

These wheelchair-accessible studio apartments are well-proportioned and full of light.

STUDIO C



Architect's drawing.

Monthly rental fee

\$650*

Heat and hydro not included

To rent these apartments, your pre-tax annual household income cannot exceed a government-prescribed limit of \$51,000 .

Specs

- 383 sq.ft
- Kitchen area has lowered counters
- Bathroom contains accessible roll-in shower
- Accessible dining/living/sleeping area

Amenities

- Storage lockers are available on site for \$25 a month
- Onsite laundry
- Elevator
- Secured resident-only entrance
- Non-smoking property
- Carefully managed by experienced housing manager Sea to Sky Community Services

Central location

38024 Fourth Avenue

Very close to a grocery store, restaurants, stores, services, the library, schools, a community garden, trails, the farmers market and bus routes.

Centrepont's non-housing portion contains a preschool, community rooms and rooms where we provide community services.

Apply

Pam Razzano
Housing Coordinator
604 892 5177
housingadmin@sscs.ca

Apply online: <http://www.sscs.ca/programs/centrepont-apartments/>